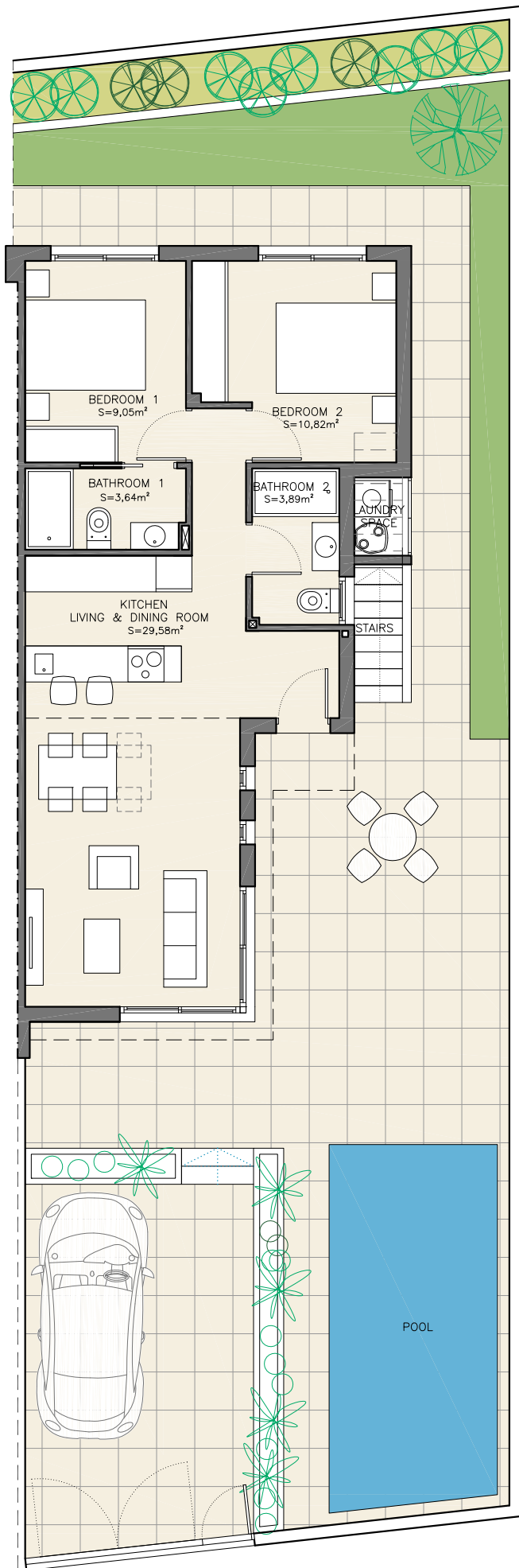
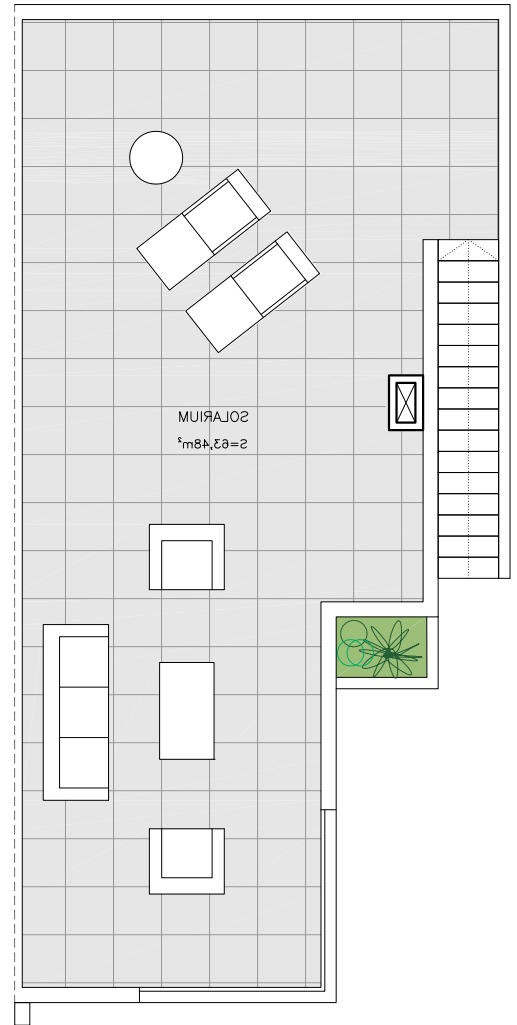


Isla Serena

RESIDENCIAL



GROUND FLOOR



SOLARIUM

AREAS / PLOT 02

PLOT AREA.....212,51 M²

VILLA TYPE-A 2 BEDROOMS

GROUND FLOOR/PLANTA BAJA.....70,21 M²

TOTAL BUILT AREA/
SUP. TOTAL CONSTRUIDA.....70,21 M²

SOLARIUM.....63,48 M²

TOTAL133,69 M²

